



## BN72-11-AC-H Wheelchair Accessible

*Our top-of-the-line shuttle buses are the ideal transporter for guests at hotels and resorts. These luxury vehicles feature a smooth ride for up to 11 passengers, quiet with battery power, and outfitted with the latest safety and creature comforts.*

- Twelve 6 V (72 V) batteries
- 11 Passengers + Wheelchair
- Wheelchair safety locks
- 10 hp AC motor
- 550 A Curtis controller
- Power steering
- Four-wheel hydraulic brakes
- Speedometer
- Horn, reverse beep, parking brake
- Roof-mounted dome lights

- 165/70-R13 automotive tires
- 13" aluminum wheels
- 20 A, 72 V to 12 V voltage reducer for all accessories
- Stereo, CD player and PA system
- Two side view mirrors
- Automatic battery charger included
- 2-point seat belts
- 19.5 mph top speed
- Dimensions: 186"L x 60"W x 81"H



### Options

- Sunbrella enclosure
- Solar panels
- Custom colors
- Side step plates
- Heater, defroster
- Fan
- Lester on-board charger



*Custom colors can be requested.*

# Let's get moving.

## Specifications for BN72-11-AC-H\*

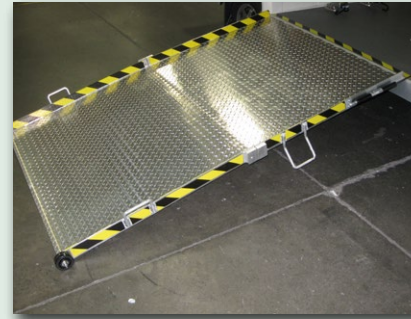
\*Specs are subject to change without notification.

Passengers	11 + Wheelchair
Battery System	12x6 V, Trojan T-105
Motor Power	10 hp AC motor
Controller Power	550 A Curtis controller
Top Speed	18 mph
Load Capacity	2640 lbs
Dimensions	186"L x 60"W x 81"H
Weight with Batteries	2640 lbs
Ground Clearance	5.9"
Turning Radius	18 ft
Wheel Base	83"
Top Climbing Grade	20%
Body Material	Fiberglass, plastic
Front Suspension	Independent, coil over shock
Rear Suspension	Leaf spring and shock
Steering System	Rack and pinion power steering
Brake System	Four-wheel hydraulic drum
Tire Size	165/70-R13 DOT
Tire Pressure	44 psi
Wheel Type	13" aluminum
Roof	Fiberglass
Drive Train	Autodrive
Voltage Reducer	20 A, 72 V to 12 V included
Windshield	AS1, DOT automotive windshield with wiper
Headlights and Taillights	Included
Brake Lights, Turning Signals	Included
LED Dome Lighting and Side Lights	Included
Horn and Reverse Beeper	Included
Seat Belts	2-point seat belts
Automatic Battery Charger	Charger included; on-board optional
Rear View Mirrors	Included
Amp Meter, Battery Indicator	Included
Odometer, Speedometer	Included
Parking Brake	Included
Automatic Battery Charger	US-made DPI transformer external charger
Warranty	One year bumper-to-bumper warranty, less wear items / Two year Trojan battery warranty, based on date code



[www.starev.com](http://www.starev.com)

## Features



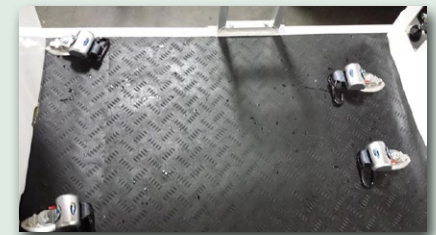
Folding wheelchair ramp with handles



Stylish STAR EV exclusive front design with chrome finish grill (custom color shown)



Sunbrella vinyl enclosure



Quick-remove wheelchair secure locks

**Your Local STAR EV Dealer:**

